



Function Point WORKBENCH™

Outsource Management

Consistency, Visibility, Accessibility

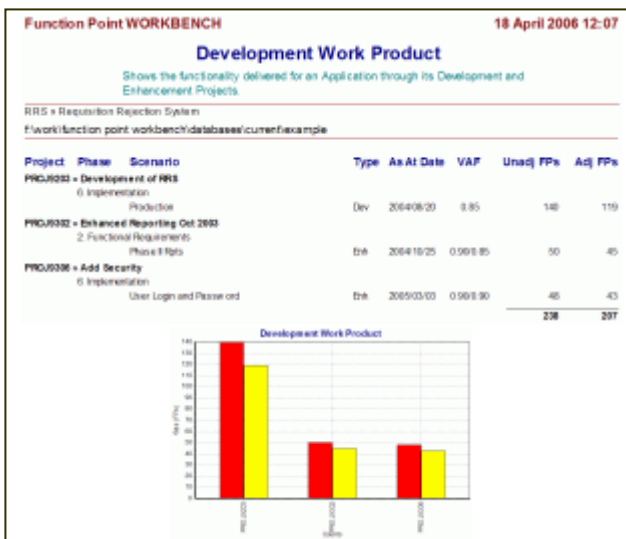
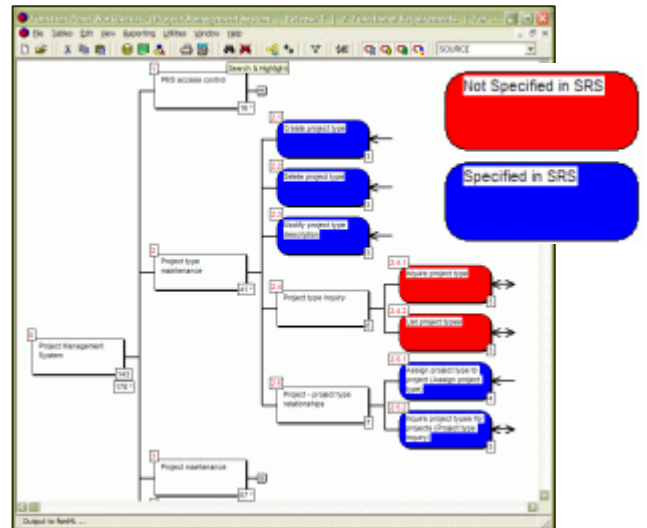
CHARISMATEK Software Metrics
www.charismatek.com

The Function Point WORKBENCH™ is the ideal solution for capturing, analysing and communicating the Function Point Analysis details for all your outsourced software projects.

The details of each Function Point Analysis are represented as a Functional Model.

A Functional Model:

- Models the complete logical solution for an outsourced project
- Can be constructed and reported both graphically and textually
- Is structured and expressed using business terminology, making it accessible to both clients and developers
- Reports the Function Point Analysis for an entire project, for project sub-systems and for user-defined project views (eg High versus Low Priority Functionality, Functionality by Project Release, etc)
- Supports distributed access to Function Point Analysis details through HTML and XML based reporting on the web



The Function Point Analysis details of all work performed is analysed and reported using the Work Item and Portfolio facilities.

- Work Item Analysis** supports sizing and reporting of multiple work items within a single project. (Individual Work Items can be such things as Change Requests or Minor Enhancements.)
- Portfolio reporting** supports sizing and reporting across multiple Function Point Counts. (Development Work Product reporting indicates the total size in Function Points of work completed within a time period against a range of software applications and/or projects. Multiple Application Project reporting indicates the total size in Function Points for a single project that encompasses work on multiple software applications.)

Function Point Analysis details are exported to effort recording and project estimating systems via a range of standard interfaces.

```
<?xml version="1.0" encoding="UTF-8" ?>
<FunctionPointCounts xmlns="http://www.charismatek.com/fsmML1.0/IFPUG" xmlns:xsi="http://www.w3.org/2001/XMLSchema-instance"
xsi:schemaLocation="http://www.charismatek.com/fsmML1.0/IFPUG http://www.charismatek.com/fsmML1.0/IFPUG/IFPUG.xsd">
<DevelopmentProjectCount FSMMethod="IFPUG" FSMVersion="4.2" fsmMLLevel="3">
<CountDescription>
<ProjectIdentification>
<ProjectSize UFP="178" CFP="0" VAF="1.07" DFP="190">
</DevelopmentProjectCount>
</FunctionPointCounts>
```